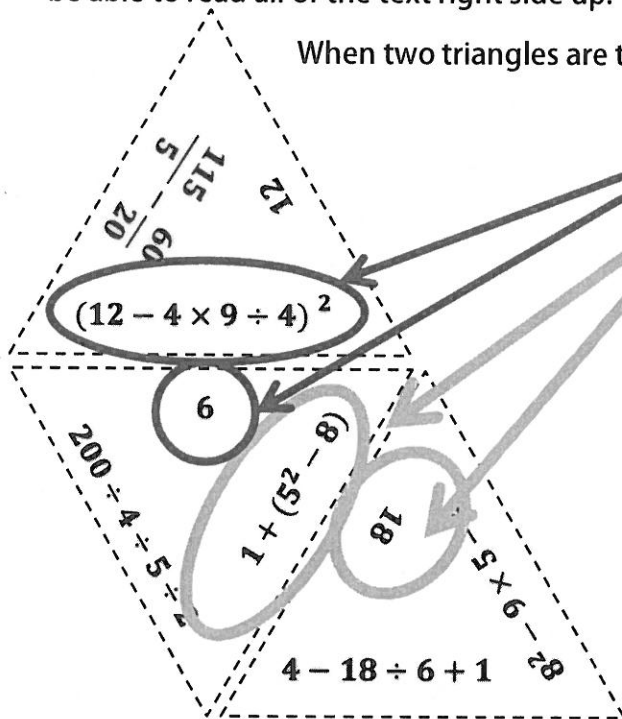


How does this work?

The text is read along the outside of the triangle. If you rotate your triangle, you will easily be able to read all of the text right side up.



For every spot that the triangles match up, the expression and answer must match up.

There will be expressions and answers that are not used. They will end up along the outer rim of the puzzle with no match. Students will have the chance to write in the answer on the outer rim of the puzzle.

How can you use this activity?

- INDEPENDENT PRACTICE
- GROUP WORK
- HOMEWORK
- ASSESSMENT
- REVIEW

How to solve the puzzle:

1. Solve each expression to find the answer.
2. Match up expressions with the correct answer.
3. When matches are found, place the puzzle pieces and work on the next part.
4. Make sure that all shared lines represent the same number.
5. Once everything matches up, you are finished! Congrats!
6. Glue puzzle pieces on worksheet.

What can you do about early finishers?

- Give students some blank triangles. Once they have finished the puzzle, they can continue the puzzle with expressions and answers of their own.
- See who can add on the most triangles before time expires.

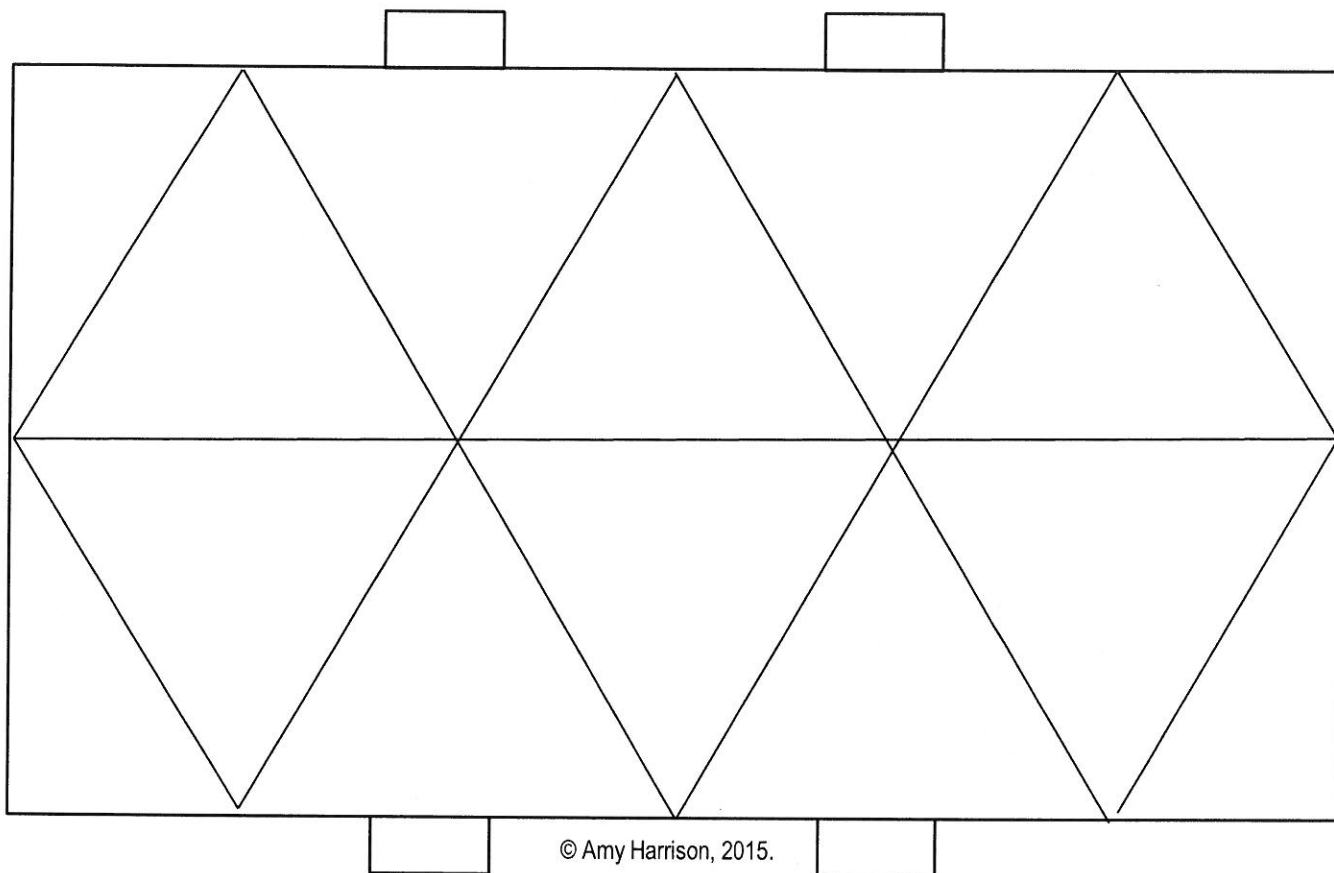
BONUS: You can now use these cards in the future.

Specific Ways to Use This Activity:

Option 1: Use this activity to mix things up! Print *page 5*, and *page 6*. Then, have students complete the puzzle, glue it on the worksheet, and turn it in as an assignment. If you have any students that do not want to do they can write down all of the problems on one notebook paper and solve them. There is an optional worksheet that will help your students get organized. Later, you can display these assignments.

Option 2: Print, cut out, and laminate the puzzle pieces. Then, store in plastic baggies. Distribute to students in groups to solve the puzzle. See who can solve it the quickest!

Order of Operations Puzzle Directions: 1. Cut out the pieces (from the bottom half of the paper) along the dotted lines.
 2. Arrange the puzzle by matching expressions and answers. 3. Glue the completed puzzle on the worksheet below.



© Amy Harrison, 2015.

Order of Operations Puzzle Directions: 1. Cut out the pieces (from the bottom half of the paper) along the dotted lines.
 2. Arrange the puzzle by matching expressions and answers. 3. Glue the completed puzzle on the worksheet above.

